

GDR-A6 Specifications

Product Features

- 100% stainless steel. This is our most durable unit yet.
- Available with 2 side outlets or 1 down outlet. All outlets are 2" ID. We also offer Fernco couplings & caps for connecting to PVC pipes.
- Legs are adjustable and leg extensions available. You can stack multiple extensions per leg.
- The legs feature flanged feet to attach to floor if needed.
- Removable strainer drawer is easy to use, requires no electricity and has no moving parts. Much safer and more reliable than a garbage disposal.
- Features a 2" tall Splash Guard that also fits under rounded sink bowls. No piping needed from the sink to the A6 unit. Can be used to replace garbage disposals.
- Best method for collecting food solids from a commercial kitchen sink before being discharged into the drain line and going to a grease interceptor.



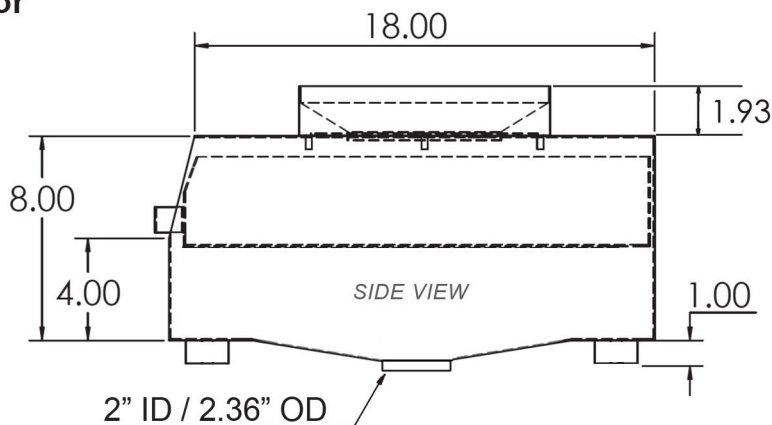
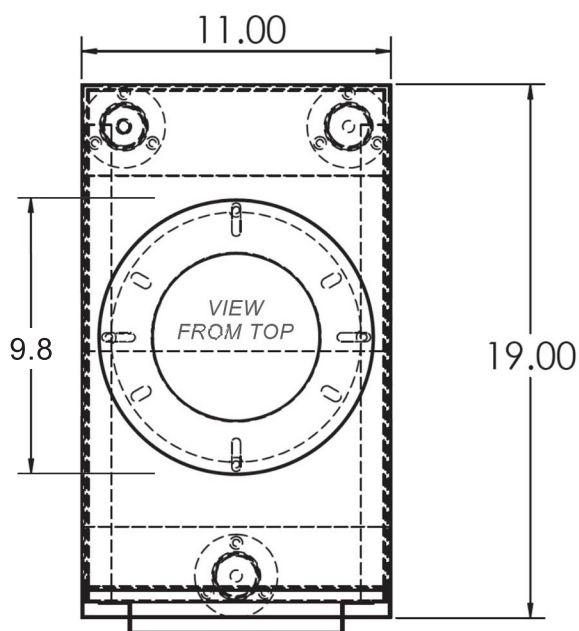
Shown above with side outlets and adjustable legs.

Garbage Gobbler™ Solids Interceptor

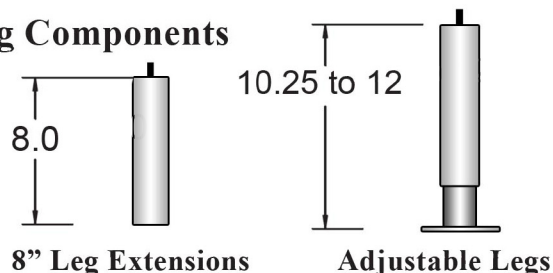
(all dimensions in inches)

Diagram shown with down outlet.

Also available with side outlet



Leg Components



Installation

1. Screw legs (and extensions) into the bottom of the housing. Multiple extensions can be used if needed. Hand tighten.
2. Place the unit under the sink. Carefully align the splash guard (on the top) with the drain opening of the sink.
3. Connect outlet(s) to the existing pipes under the sink and cap off any unused outlet (if needed). We offer Fernco caps and couplings for connecting to PVC pipes.
4. Bolt the flanged feet to the floor for extra stability if needed.

Copyright Drain-Net Technologies LLC 2025